



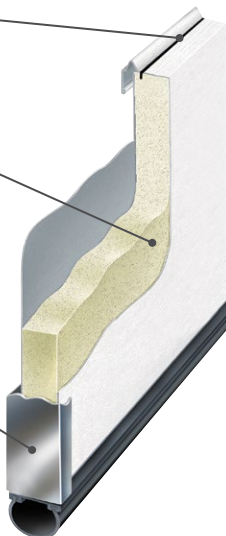
**DOOR FEATURES**

**Effective Joint Seals**

Snug-fitting tongue-and-groove section joints reduces wind and weather from entering the garage.

**Foamed-In-Place Polyurethane Insulation** Thermally efficient with a U-factor\* of .15 and an R-value\*\* of 12.12

**Heavy Gauge Steel End Caps** Wrap-around end caps trim out door edges for better appearance, improved strength and protect the insulation from damage.



**Silent Glide Rollers**

Nylon rollers with solid steel shafts provide years of smooth, quiet and dependable operation.

**High Cycle Spring Option**

Choose a 25,000 cycle spring for more than twice the life of a standard torsion spring.

**Wind Load Options Available**

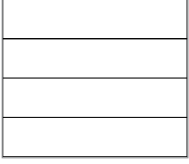
with structural reinforcements for use in coastal or high wind regions.

**Limited Lifetime Warranty**



\*U-factor is independently tested and verified per ANSI/DASMA 105 using solid doors and specific product sizes.  
 \*\*Wayne Dalton uses a calculated door section R-value for our insulated doors.

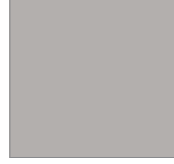
## 1 Panel



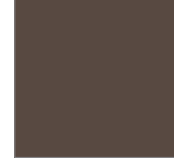
Flush Panel

## 2 Choose Your Color

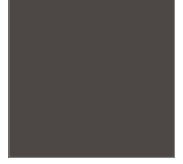
### Modern Metallic Finishes



Silver



Dark Bronze



Black Frost

## 3 Choose Your Windows



Clear Long



Clear Short



Double Narrow



Narrow

### Optional Window Placement

Vertical Option  
*(left or right)*



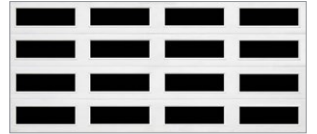
Double Row Option  
*(top and intermediate)*



Vertical and Horizontal  
*(left or right)*



All Window Option



### Glass Options



Clear\*



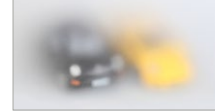
Gray Tinted  
Tempered



Green Tinted  
Tempered



Bronze Tinted  
Tempered



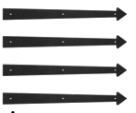
Satin Etched\*  
Privacy



Obscure\*

\*Also available in Tempered and Insulated

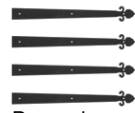
## 4 Choose Your Decorative Hardware



Arrow



Aspen



Barcelona



Bean



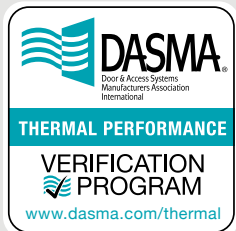
Conifer



Fleur De Lis



Spear



Wayne Dalton participates in the DASMA Thermal Performance Verification Program. The program verifies the thermal performance of sectional garage doors. The lower the U-factor rating, the better the thermal performance.



Symbol indicates verified U-factor rating in accordance with the DASMA Thermal Performance Verification Program.

## THERMAL PERFORMANCE

**Wayne Dalton**

2501 S. State Hwy. 121 Bus., Ste 200  
Lewisville, TX 75067

[wayne-dalton.com](http://wayne-dalton.com)



Wayne Dalton Sales Center of Windsor - 13425 Desro Dr, Tecumseh, ON N9K 0B7, Canada  
(519) 735-7790